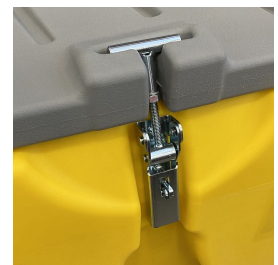
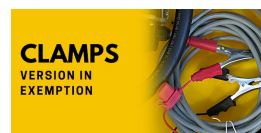
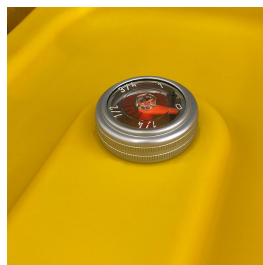




## Carrytank® 220 Pick-up

Polyethylene tank for Diesel fuel transport on pick-up vehicles, in exemption from ADR

NEW



### Description

The CARRYTANK 220 pick-up, an evolution of our CARRYTANK 220, is a transportable diesel fuel tank made from roto-molded linear polyethylene. The 220 pickup tank can be placed inside the body of a pickup vehicle and remain below the height of the side boards, allowing the installation of the most common closures for bodies. Due to this it's sheltered from atmospheric agents such as sun, rain or snow giving product a longer life. Drawing on its considerable experience, ES has also optimized the dimensions of the tank for international transport.

Also available in gasoline version. Homologated diesel version is also available.

## Main features

- made from roto-molded linear polyethylene
- reinforced padlockable lid and reinforced closures.
- level indicator for fitting the most common filtering systems
- aluminum filling plug
- safety valve
- transfer unit
- forklift pockets for lifting
- handles for lifting when empty
- recesses for securing straps to the support base
- all inserts are made of aluminum or diesel fuel-compatible material.

## Outfittings

### Configuration model AC:

- DC fuel transfer pump, mod. DEVIL40 (12 or 24 V), flow rate 40 l/min.
- 4 m of hose.
- Automatic nozzle.
- For the exempted version: 6 metres of electric cable and clamps for battery connection.
- For the homologated version: 6 metres of electric cable and bipolar connector for battery connection.
- Optional: digital flow meter, mod. M24.
- Optional: water separator filter.

### Configuration model BC:

- AC fuel transfer pump, mod. DEVIL55 (230 V), flow rate 55 l/min.
- 4 m of hose.
- Automatic nozzle.
- 2 m of power cable with Schuko plug for connection to BC supply (Diesel fuel).
- Optional: digital flow meter, mod. M24.
- Optional: water separator filter.

### Configuration model ZC:

- DC fuel transfer pump, mod. 12/24V, flow rate 35/70 l/min
- 4 m of hose.
- Automatic nozzle.
- For the exempted version: 6 metres of electric cable and clamps for battery connection.
- For the homologated version: 6 metres of electric cable and bipolar connector for battery connection.
- Optional: digital flow meter, mod. M24.
- Optional: water separator filter.

## Accessories



Digital fuel meter, mod. M24, for Diesel Fuel



ES Filter

For diesel and gasoline. Water absorption and impurity filtration. Filter capacity 10µm. Flow rate 70 l/min.



Filter Water captor 70

For diesel and gasoline. Water absorption and impurity filtration. Filter capacity 30µm. Flow rate 70 l/min.



Drip Tray

## Technical data

Model	Nominal capacity (lt)	Width (mm)	Base width (mm)	Depth (mm)	Base depth (mm)	Highness (mm)	Thickness (mm)	Empty weight (kg)	Weight with pump unit (kg)
CTP220	220	1,155	1,050	805	720	450	7	19	31

## Loading Plan

Model	Container 20'	Container 40'	Container 40' HC	Std truck 2700h mm
CTP220	70	140	168	192

## Product code

CTP	X	X	X	X
<b>Model</b> CTP = Carrytank pickup	<b>Fuel</b> G = Diesel K = Diesel homologated	<b>Volume</b> 220 = 220 l	<b>Pump</b> A = 40 l/min B = 55 l/min Z = 40 l/min dual voltage 12/24V	<b>Nozzle</b> C = Automatic 60 l/min

Not all combinations are available

## Approval



Transportable materials	Diesel / UNI1202
Classes ADR	3
Packaging group	II - III